

Agnis Driksna

Director of Development and
Communication Department



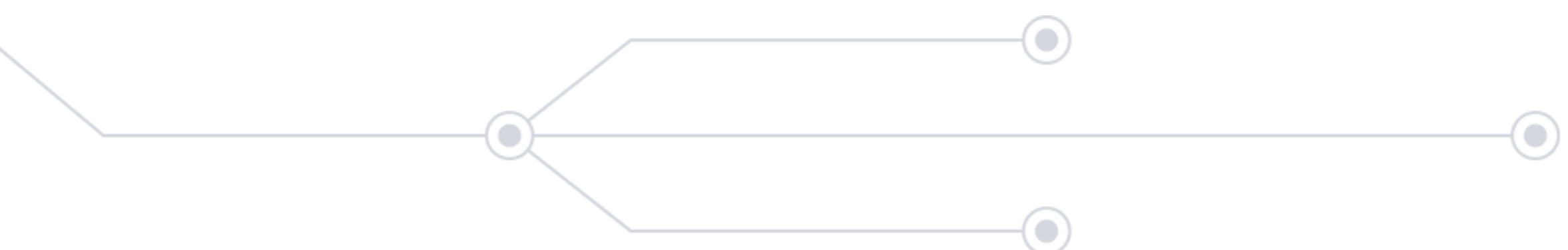
Plans and activities of Rail Baltica implementation in Riga

Responsibilities of EDZL

National Implementing Body

- National studies
- Land Acquisition
- Design and construction of Stations
- Salaspils Intermodal Logistics Centre
- Construction of the mainline excluding cross-border sections



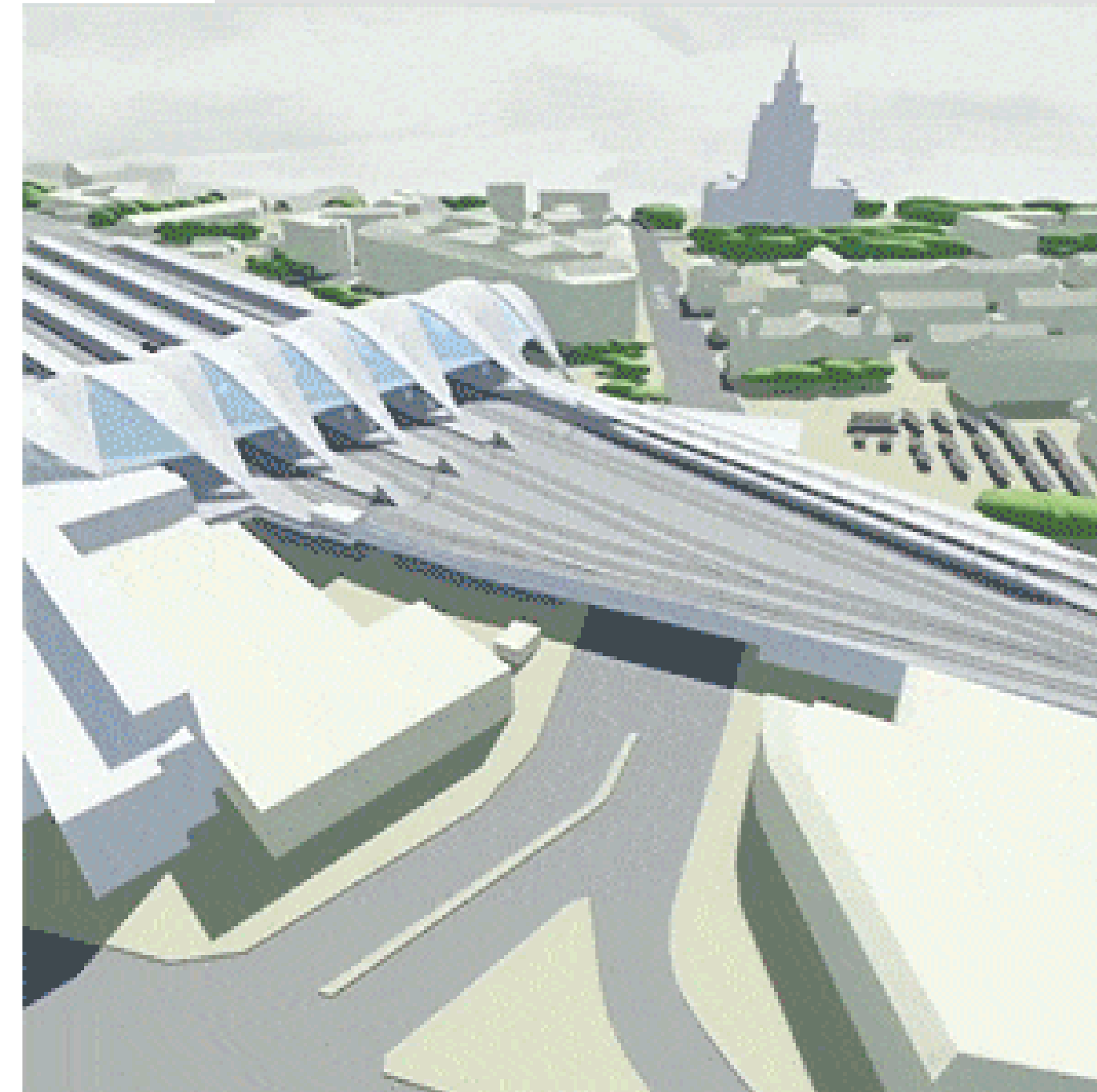
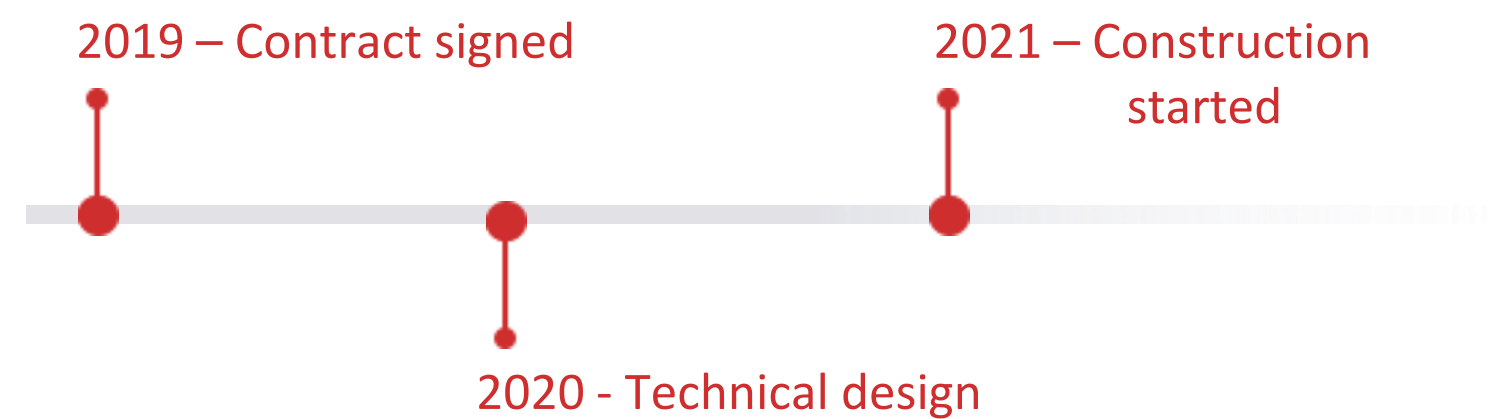


Riga Central

Riga Central

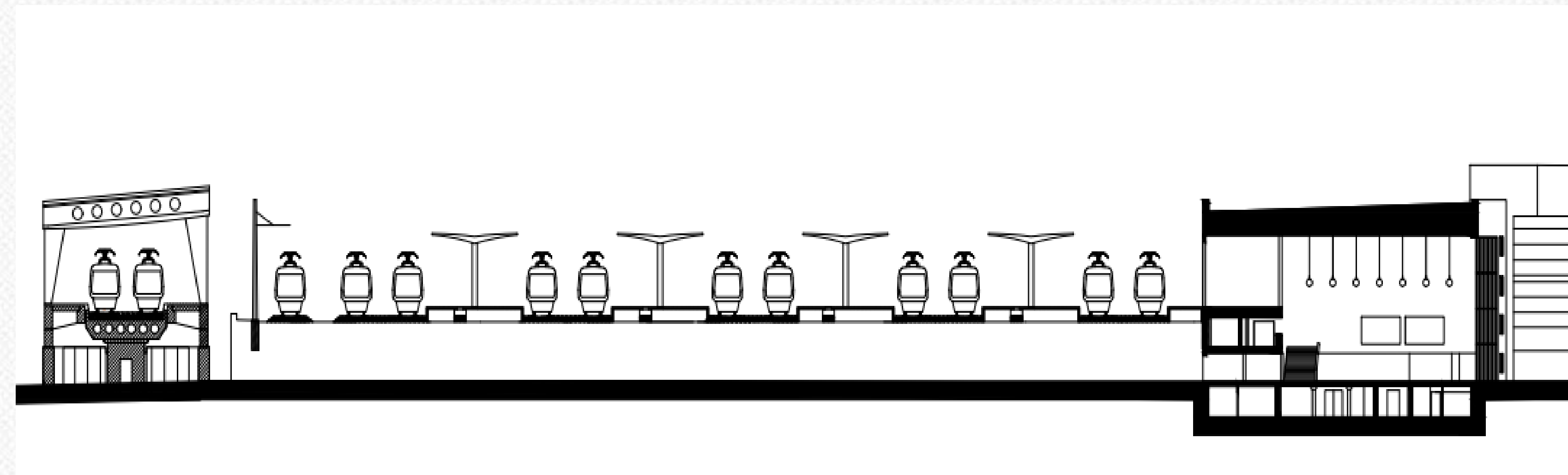
Design & Build

- Riga = Baltic Central Transport Hub
- The backbone for passenger mobility
- Connectivity that benefits passengers
- «Last mile»

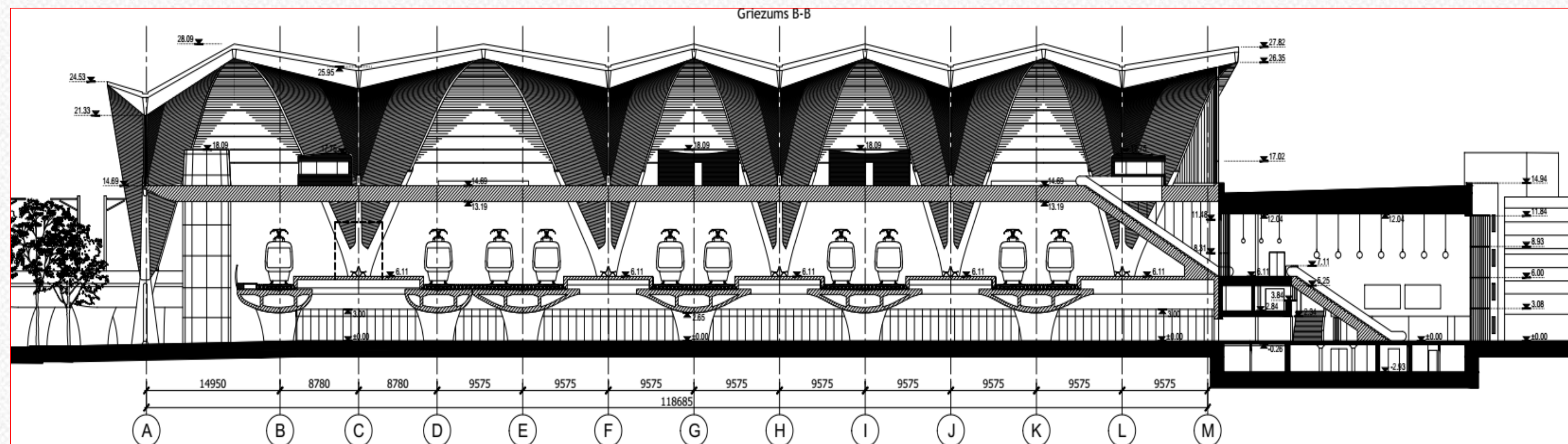


Rail Baltica Riga Central Station

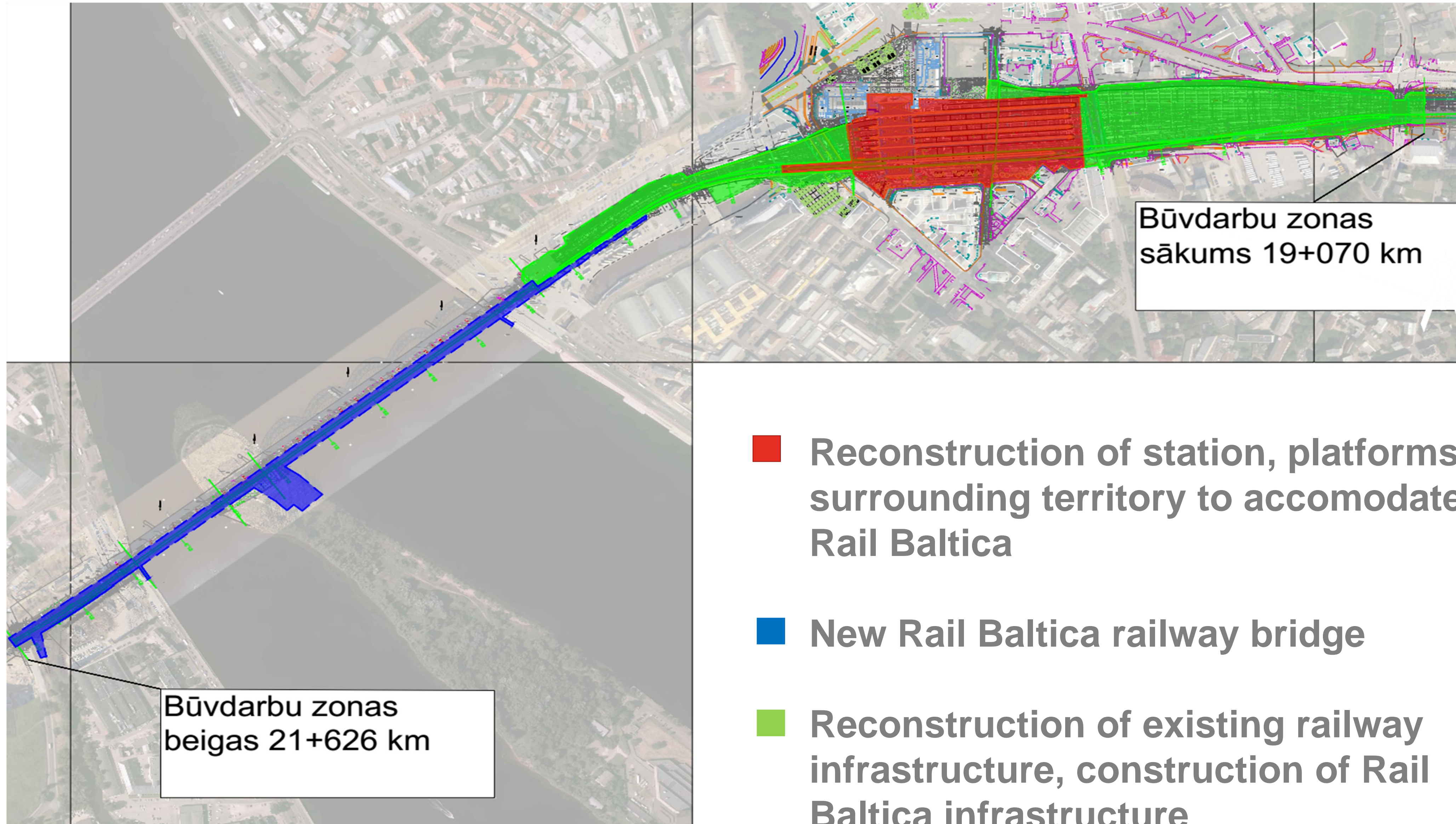
2015 – 2019



2015



2019

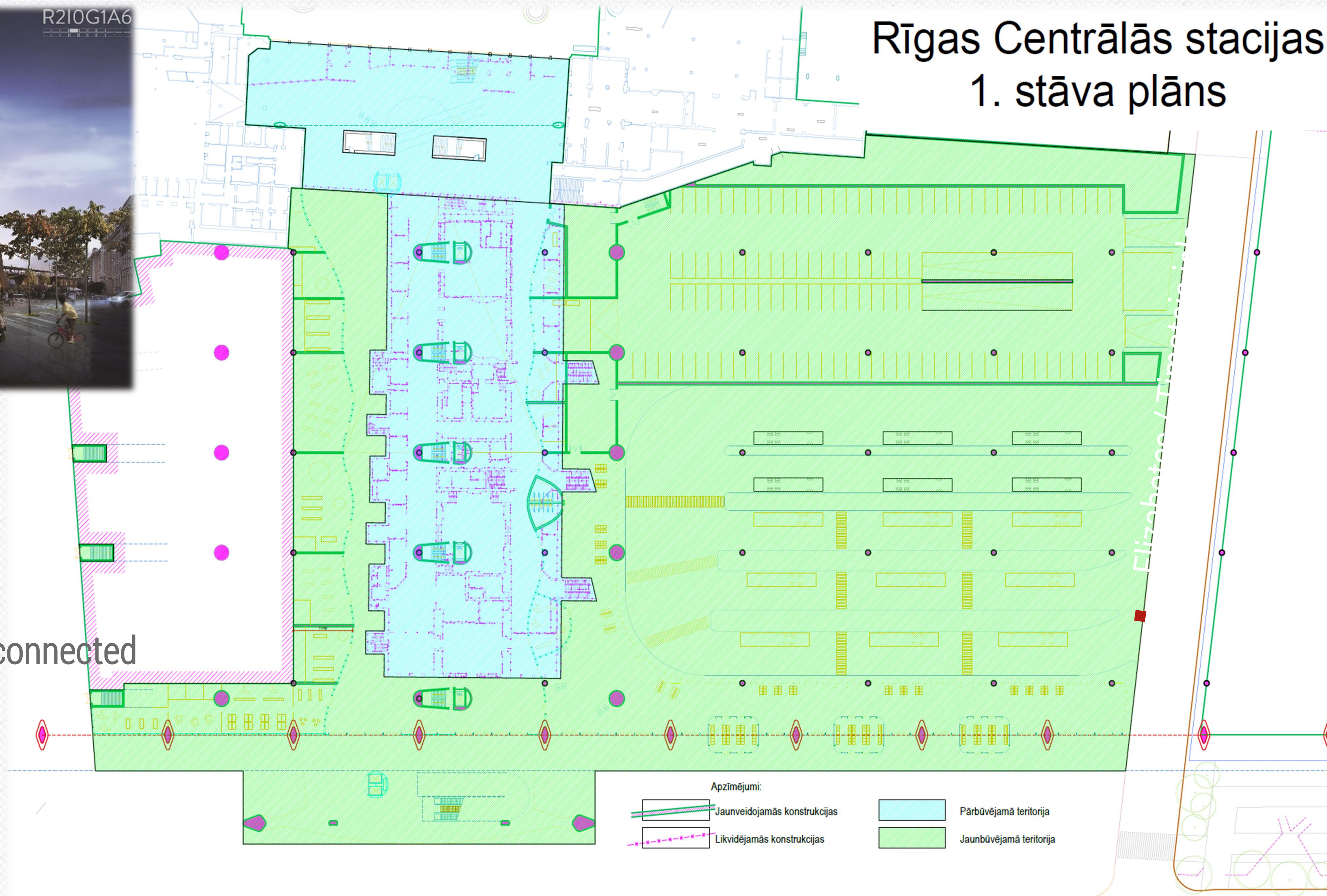




R210G1A6

Rīgas Centrālās stacijas 1. stāva plāns

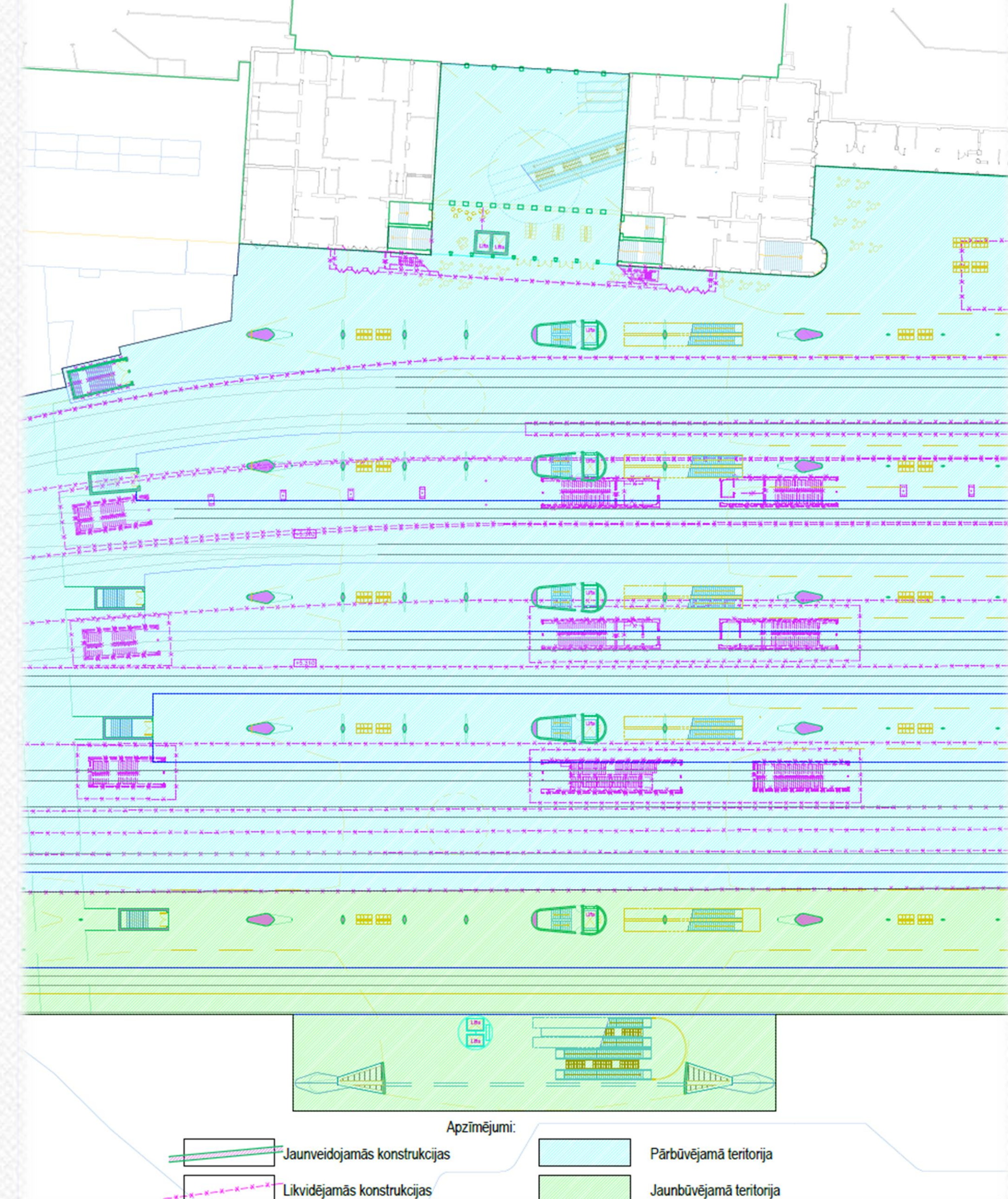
- A and B tunnels merged
- Escalators constructed
- Embankment removed
- Elizabetes/Timoteja streets connected
- Pedestrian and passenger flow improved





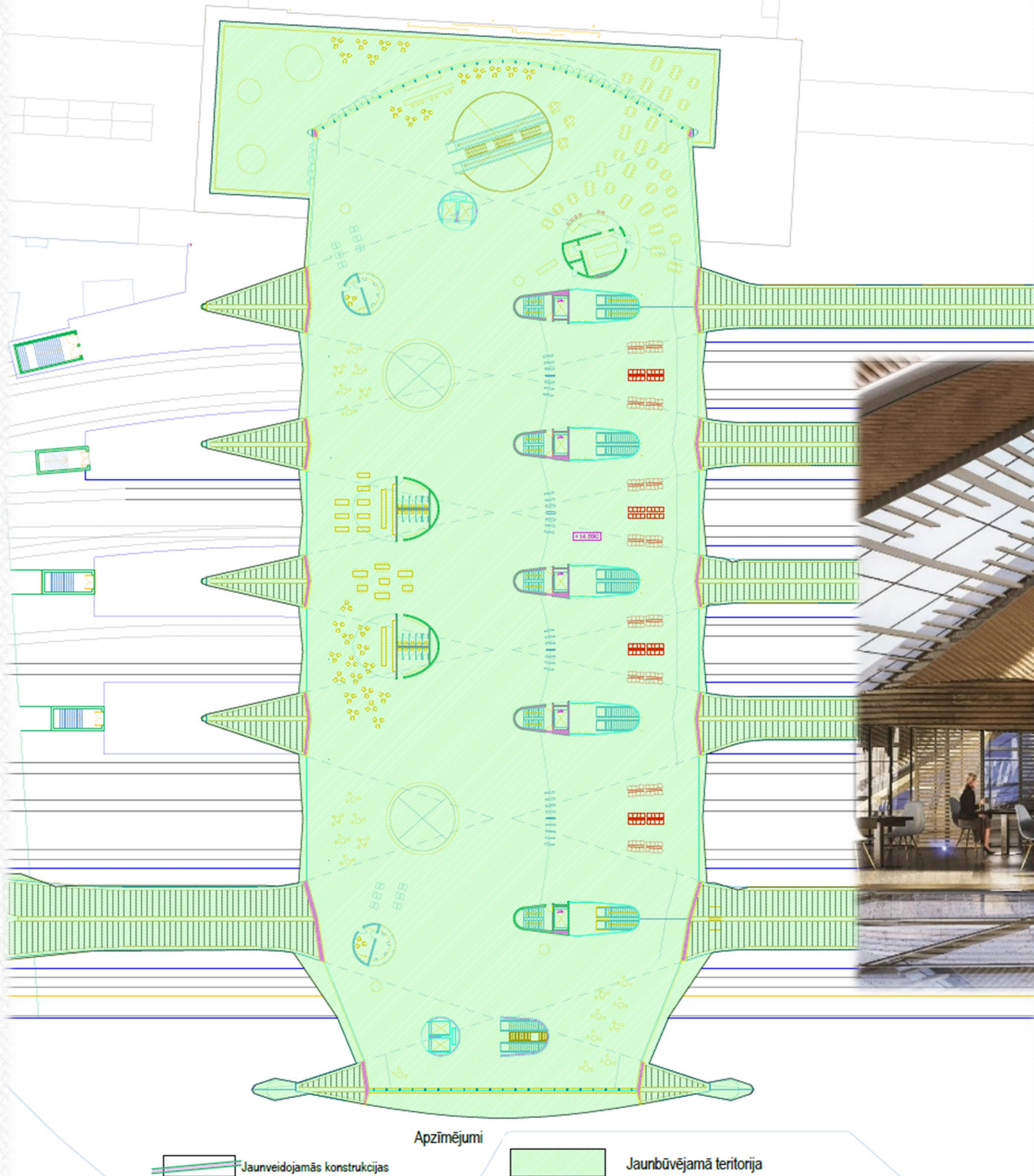
- Accommodation of 1520 mm railway infrastructure – 16000 m of reconstructed tracks
- Rail Baltica – International and Shuttle trains
- Improved access, comfort and safety

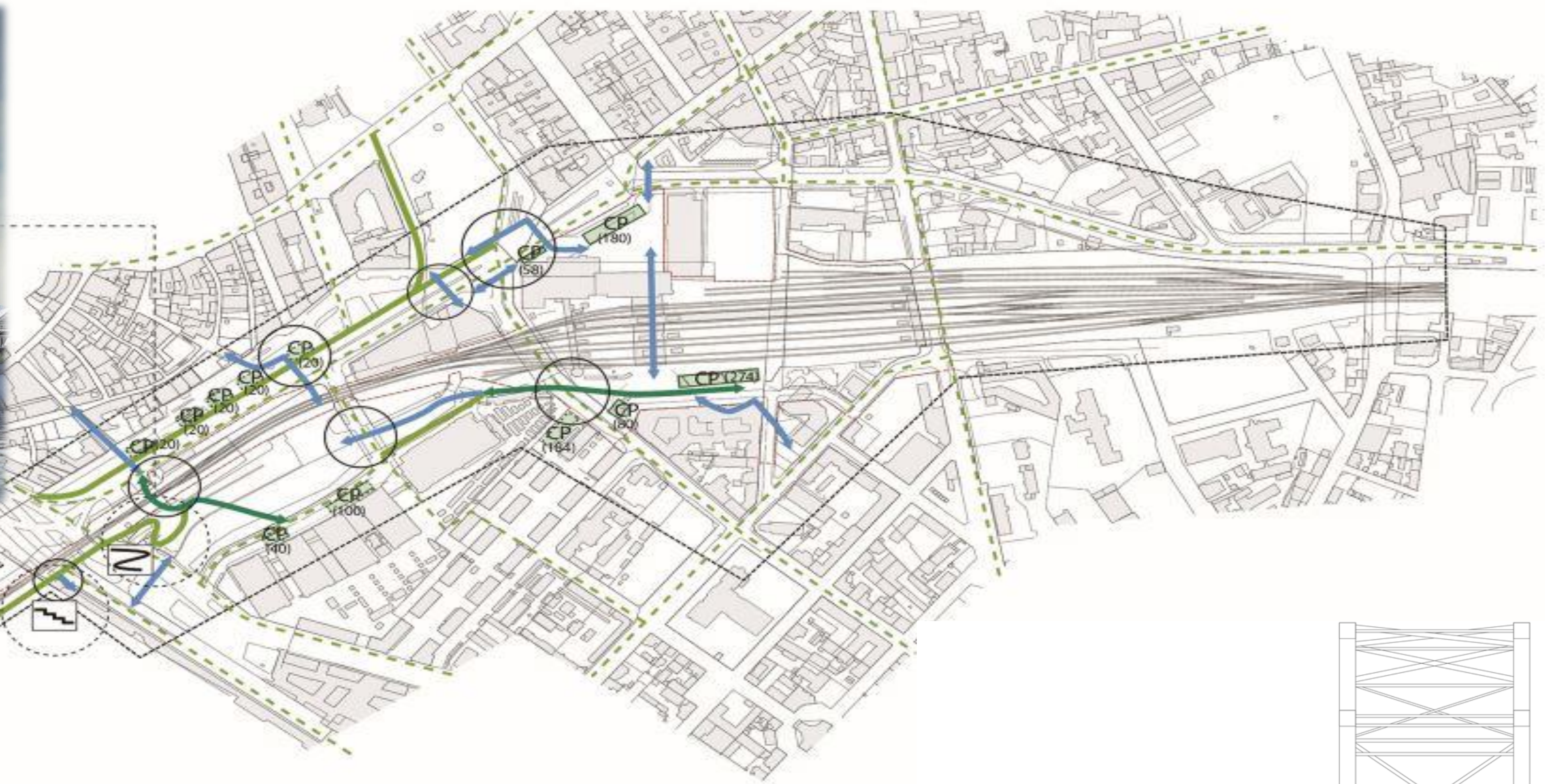
Rīgas Centrālās stacijas 2. stāva plāns



Rīgas Centrālās stacijas 3. stāva plāns

- Construction of 3rd floor for passenger services (waiting area, ticket office/machines, security check, etc.)



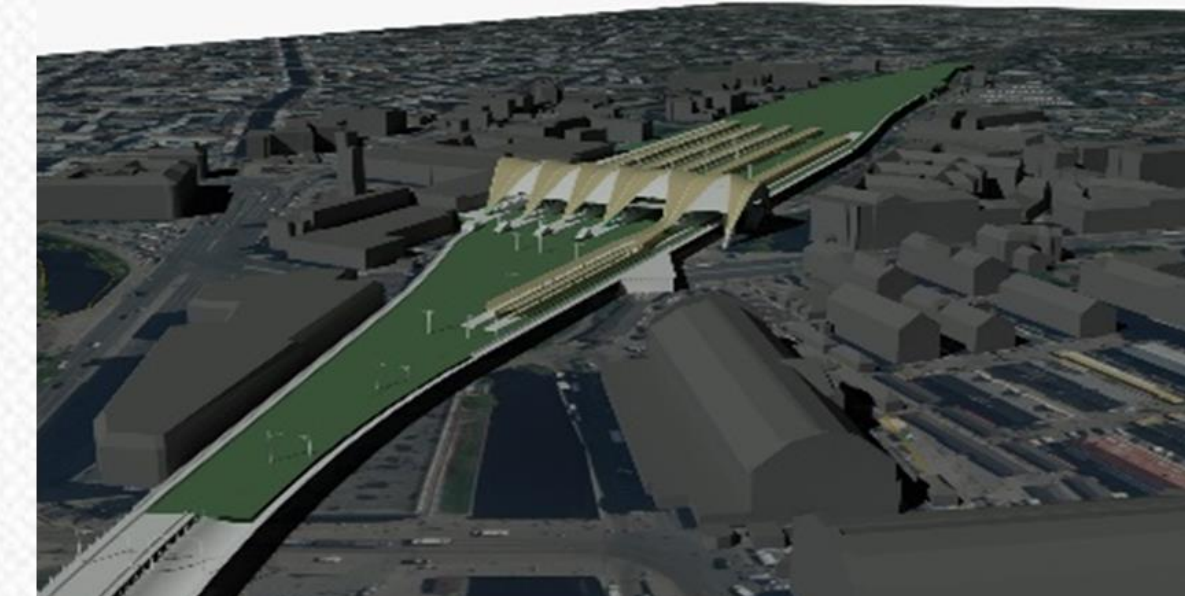
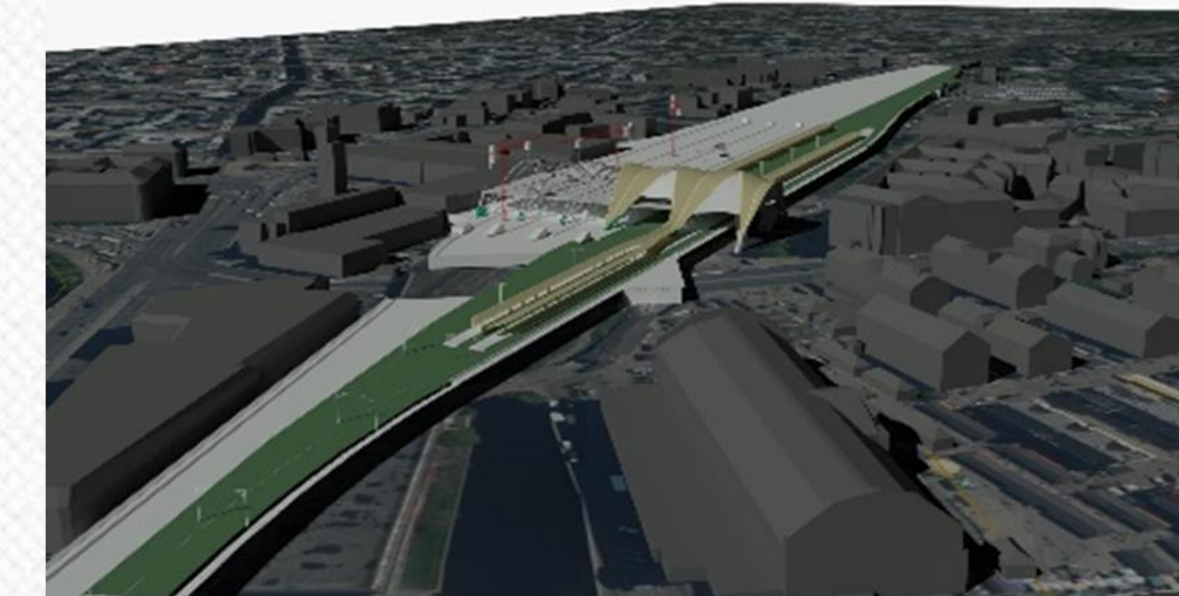
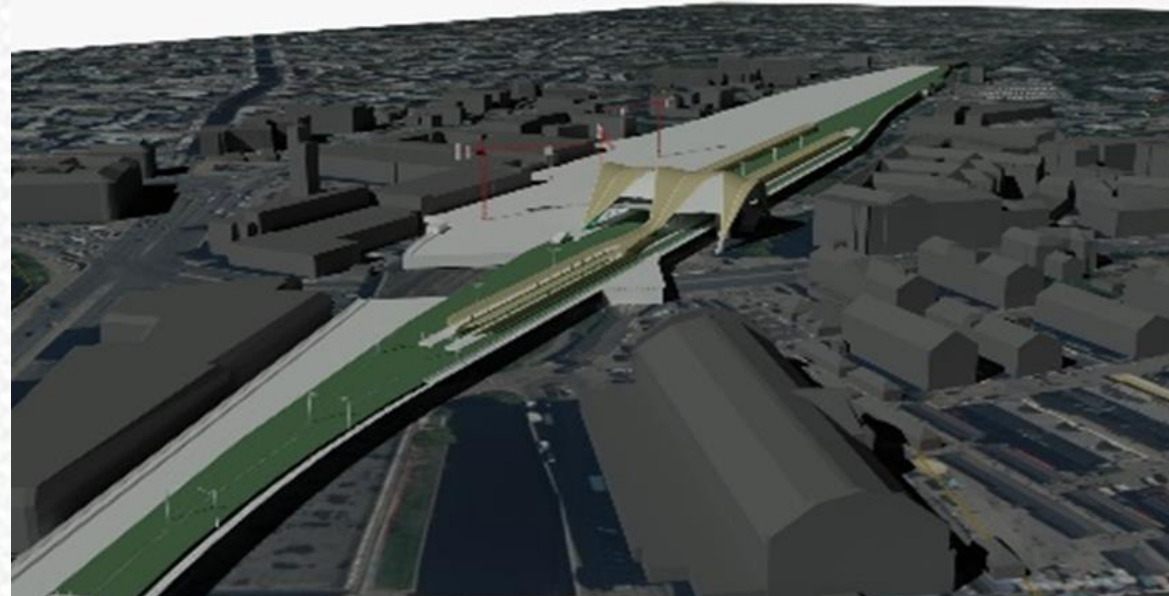
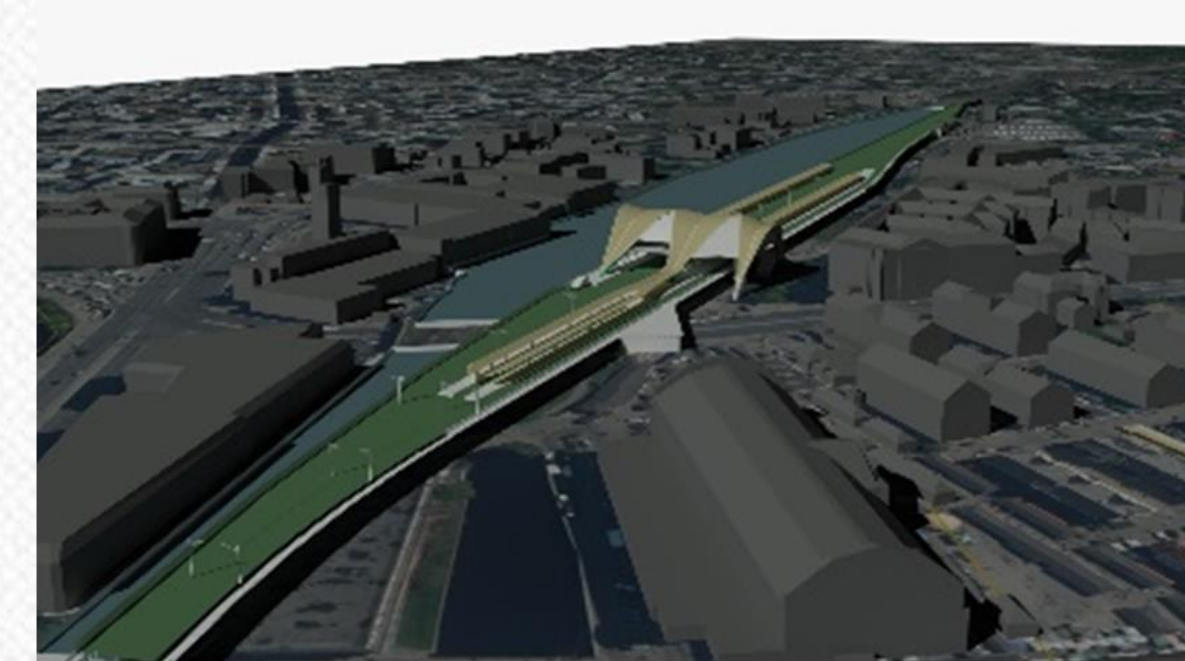
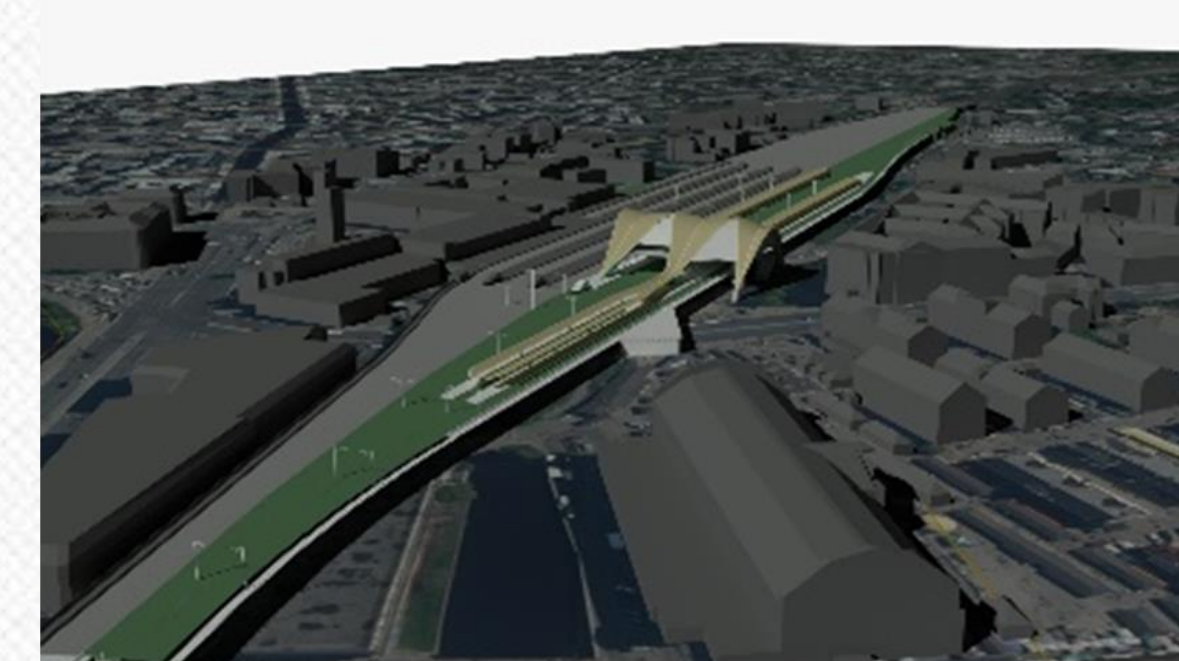
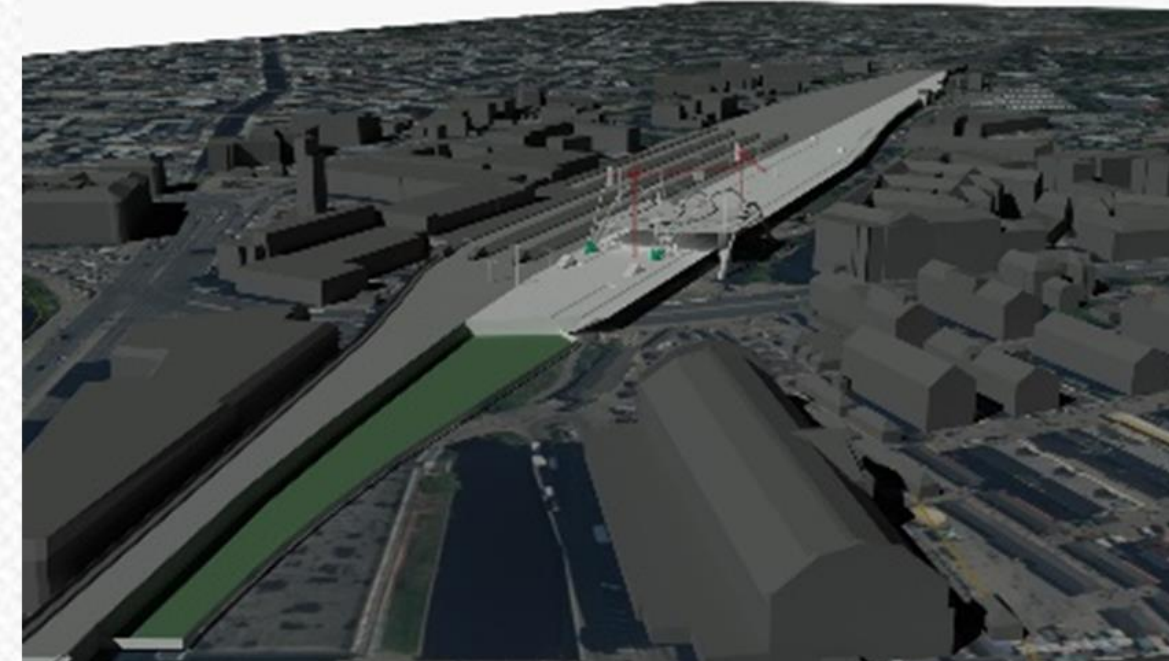
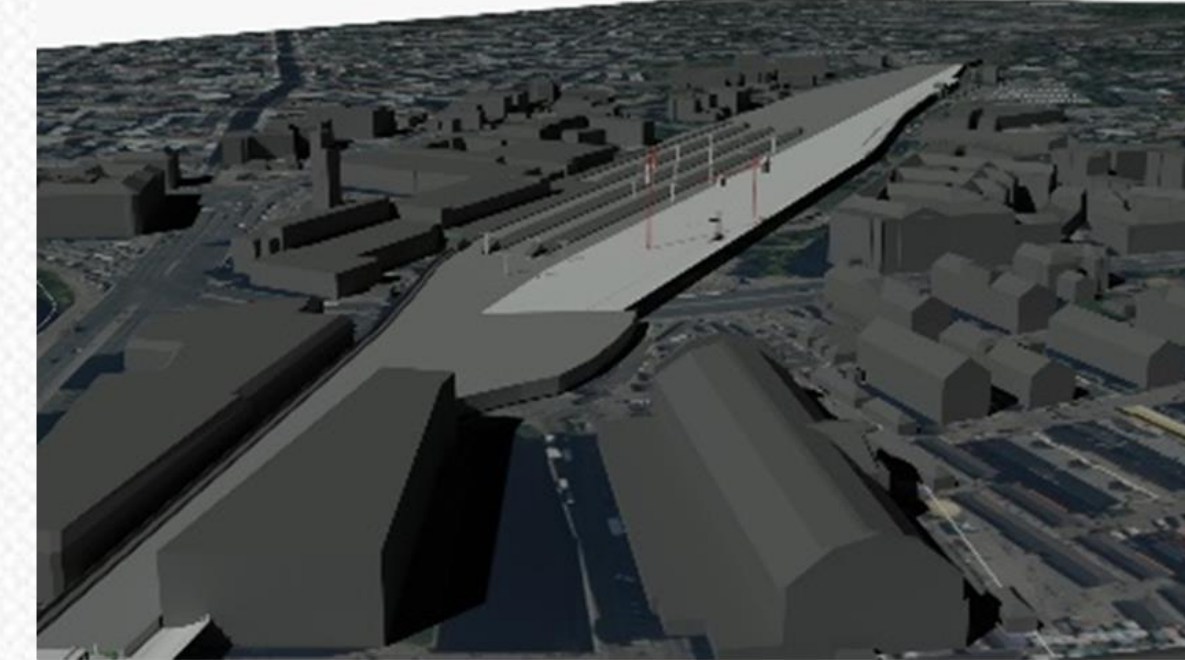
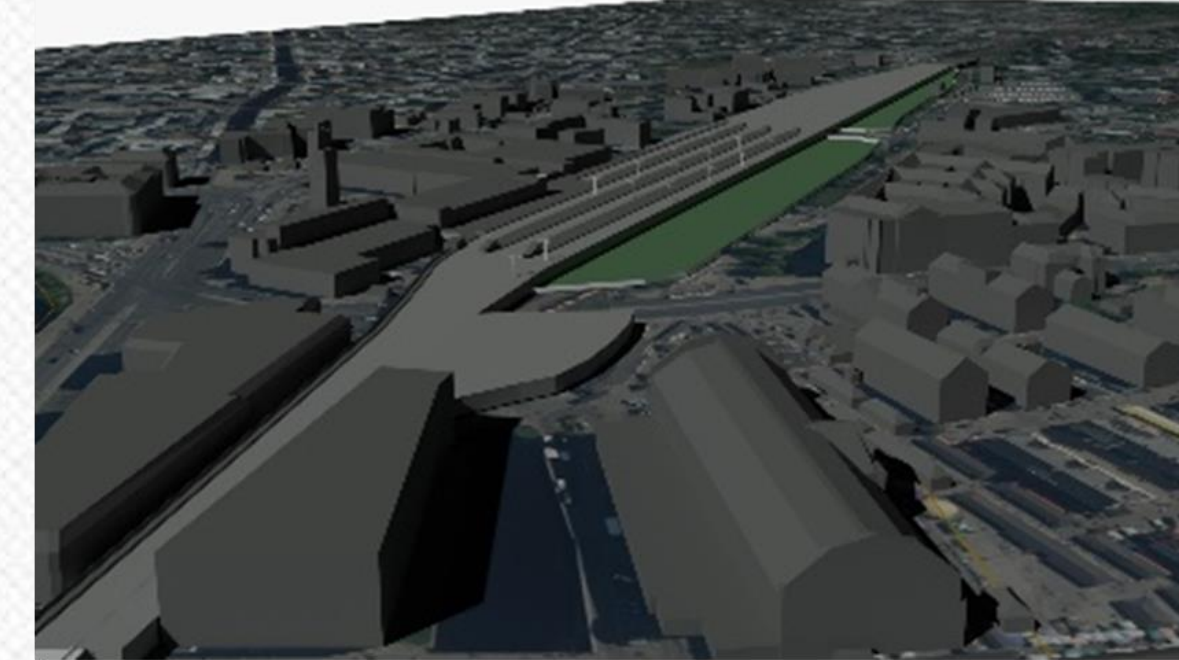
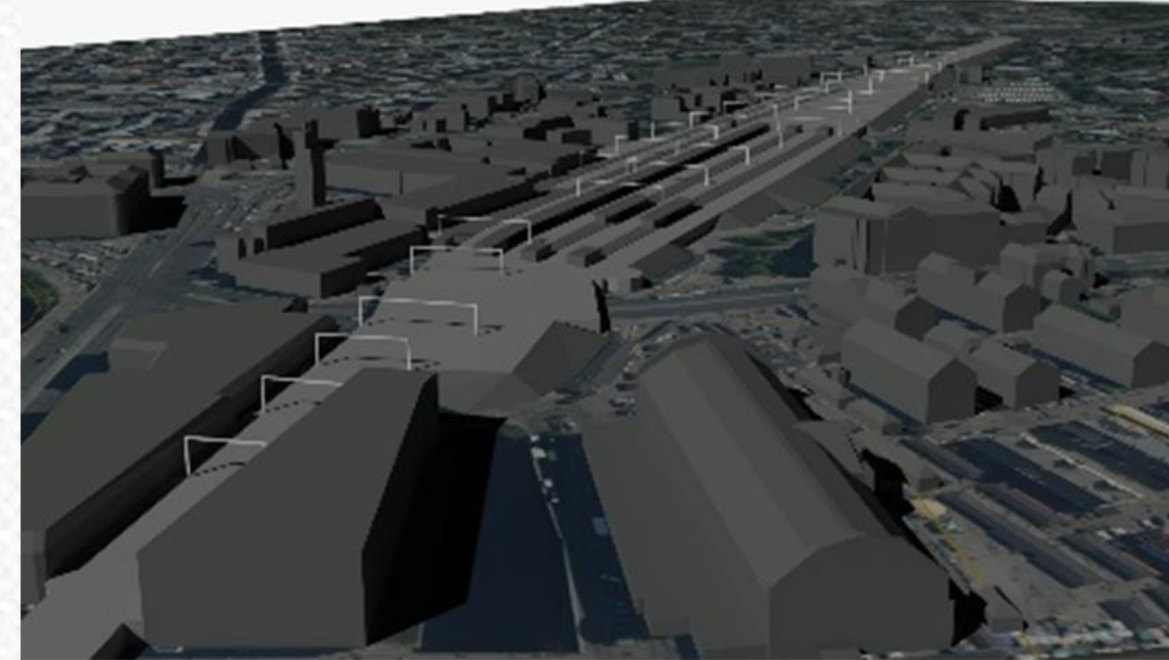


-
- The left drawing is a cross-section of the bridge deck, showing a wide, flat top surface supported by a central pier. Two vertical green lines are drawn across the deck, labeled 'RB siležu koja ass' (RB longitudinal stiffener axis). The right drawing is a cross-section of the tower, showing a tall, rectangular structure with a lattice of diagonal bracing. Two vertical blue lines are drawn across the tower, labeled '1520mm siležu koja ass' (1520mm longitudinal stiffener axis).

Construction phases

- Design 2021
- South side 2022
- North side 2024
- Finishing 2025
- Bridge 2022-2025

Traffic will not be completely closed



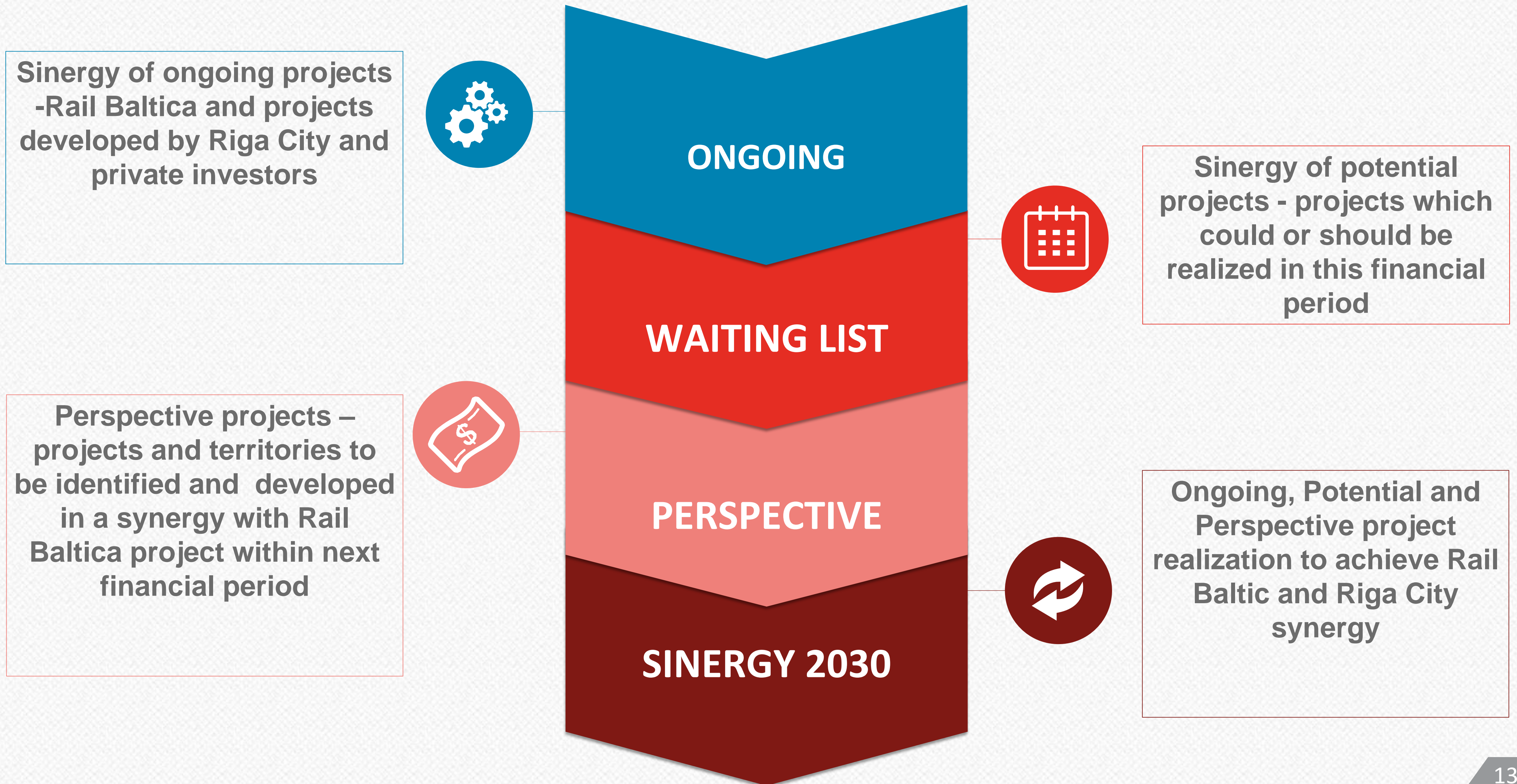
Riga Central

Sinergy for
better result

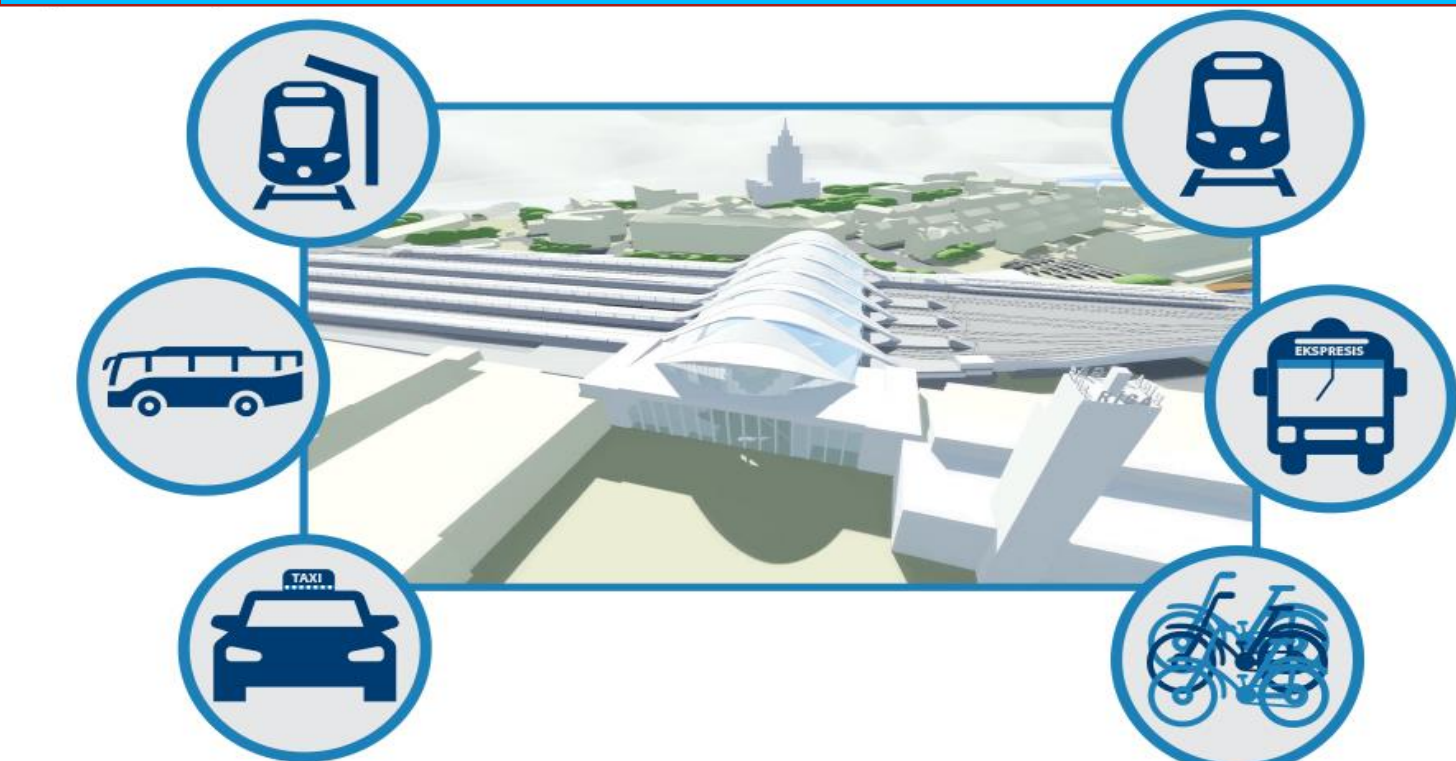
- Full commitment = Consistent progress
- Rail Baltica solutions
- Teritorial planning
- Stakeholder management and project synergy
- NGO and society
- Development «turbine»



Way forward to achieve synergy between Rail Baltica and Riga City



Connectivity



Avoti:
 Eiropas Revīzijas palāta (2018). Ispaidis ziņojums, "Eiropas ātrgaitas dzelzceļa tīkls nav izveidots, tā vietā - neefektīva sadrumstalotība". Vairāk: https://www.europa.eu/lista/ECADocument/SR18_19/SR_HGH_SPEED_RAIL_Vpif
 AECOM (2016). Ziņojums "Rai Baltica dzelzceļa līnijas integrācija Rīgas centrālā multimodālā sabiedriskā transporta mezglā - tehniskā risinājuma izstrāde". Vairāk: http://www.raibaltica.org/wp-content/uploads/2017/05/AECOM_RPT-FinalReport_English_2016.pdf
 Centrālā stacijas pārvalde (2017). "Dzelzceļu stacijas republikas pilsētās, novadu pilsētās un novados".
 © Eiropas Dzelzceļa līnijas
 Līdzfinansē Eiropas Savienības Eiropas infrastruktūras savienošanas instruments.

Re-urbanisation



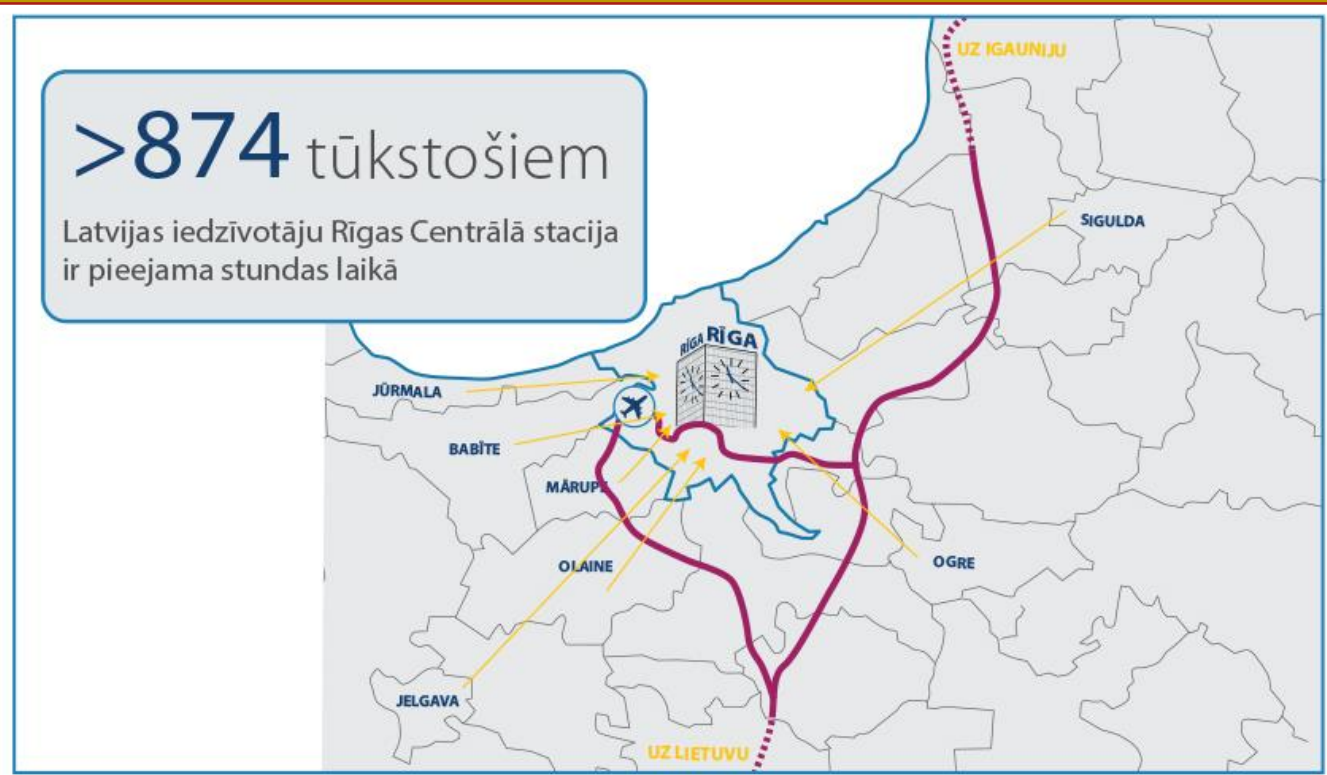
Avoti:
 Eiropas Revīzijas palāta (2018). Ispaidis ziņojums, "Eiropas ātrgaitas dzelzceļa tīkls nav izveidots, tā vietā - neefektīva sadrumstalotība". Vairāk: https://www.europa.eu/lista/ECADocument/SR18_19/SR_HGH_SPEED_RAIL_Vpif
 AECOM (2016). Ziņojums "Rai Baltica dzelzceļa līnijas integrācija Rīgas centrālā multimodālā sabiedriskā transporta mezglā - tehniskā risinājuma izstrāde". Vairāk: http://www.raibaltica.org/wp-content/uploads/2017/05/AECOM_RPT-FinalReport_English_2016.pdf
 Centrālā stacijas pārvalde (2017). "Dzelzceļu stacijas republikas pilsētās, novadu pilsētās un novados".
 © Eiropas Dzelzceļa līnijas
 Līdzfinansē Eiropas Savienības Eiropas infrastruktūras savienošanas instruments.

Services

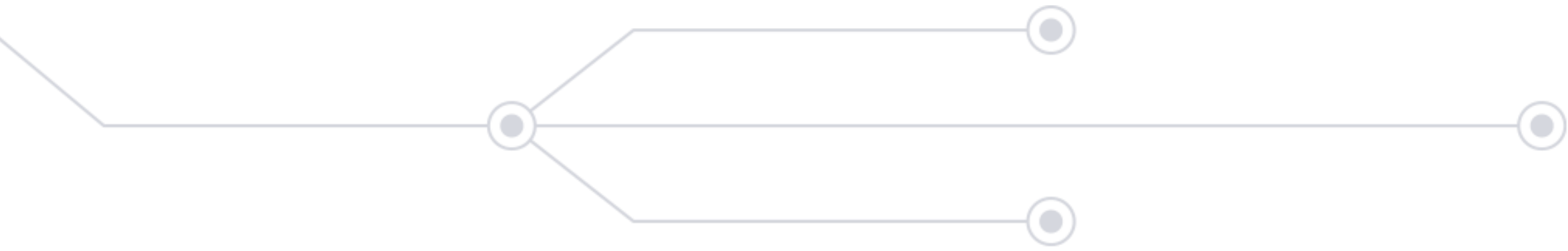


Avoti:
 Eiropas Revīzijas palāta (2018). Ispaidis ziņojums, "Eiropas ātrgaitas dzelzceļa tīkls nav izveidots, tā vietā - neefektīva sadrumstalotība". Vairāk: https://www.europa.eu/lista/ECADocument/SR18_19/SR_HGH_SPEED_RAIL_Vpif
 AECOM (2016). Ziņojums "Rai Baltica dzelzceļa līnijas integrācija Rīgas centrālā multimodālā sabiedriskā transporta mezglā - tehniskā risinājuma izstrāde". Vairāk: http://www.raibaltica.org/wp-content/uploads/2017/05/AECOM_RPT-FinalReport_English_2016.pdf
 Centrālā stacijas pārvalde (2017). "Dzelzceļu stacijas republikas pilsētās, novadu pilsētās un novados".
 © Eiropas Dzelzceļa līnijas
 Līdzfinansē Eiropas Savienības Eiropas infrastruktūras savienošanas instruments.

Accessibility



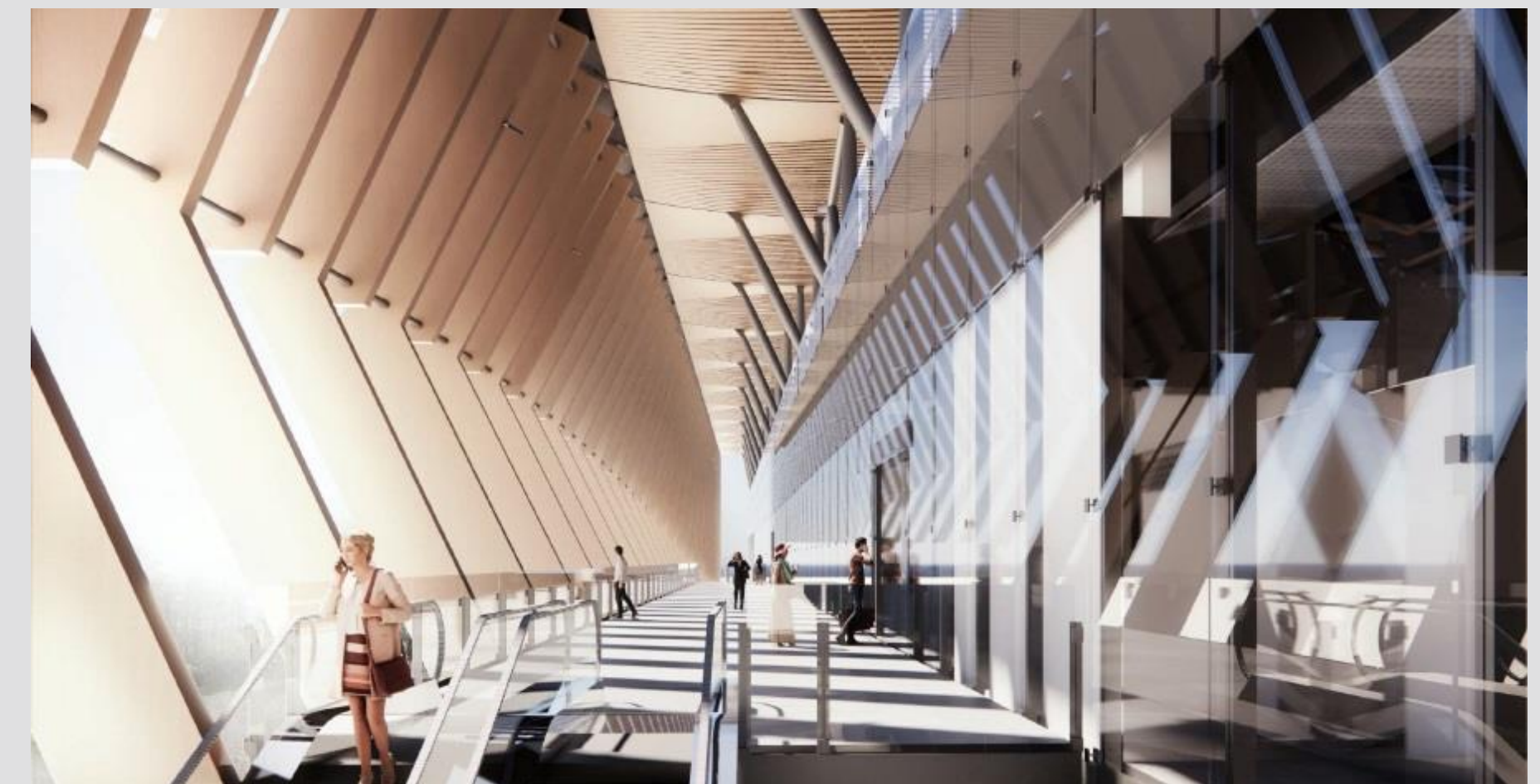
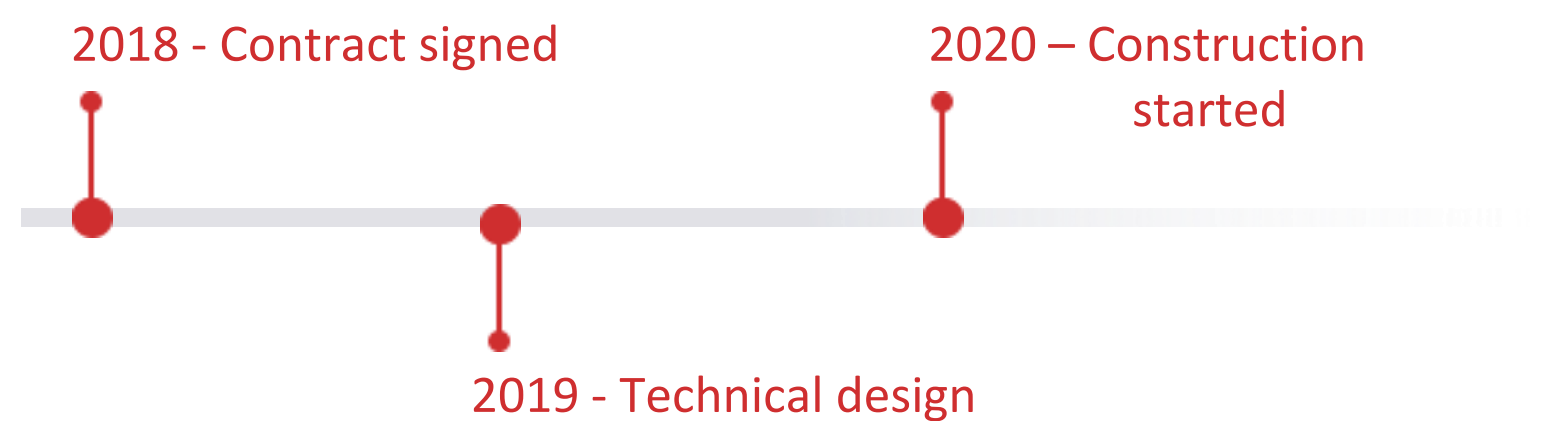
Avoti:
 Eiropas Revīzijas palāta (2018). Ispaidis ziņojums, "Eiropas ātrgaitas dzelzceļa tīkls nav izveidots, tā vietā - neefektīva sadrumstalotība". Vairāk: https://www.europa.eu/lista/ECADocument/SR18_19/SR_HGH_SPEED_RAIL_Vpif
 AECOM (2016). Ziņojums "Rai Baltica dzelzceļa līnijas integrācija Rīgas centrālā multimodālā sabiedriskā transporta mezglā - tehniskā risinājuma izstrāde". Vairāk: http://www.raibaltica.org/wp-content/uploads/2017/05/AECOM_RPT-FinalReport_English_2016.pdf
 Centrālā stacijas pārvalde (2017). "Dzelzceļu stacijas republikas pilsētās, novadu pilsētās un novados".
 © Eiropas Dzelzceļa līnijas
 Līdzfinansē Eiropas Savienības Eiropas infrastruktūras savienošanas instruments.



▴ Riga International Airport Station

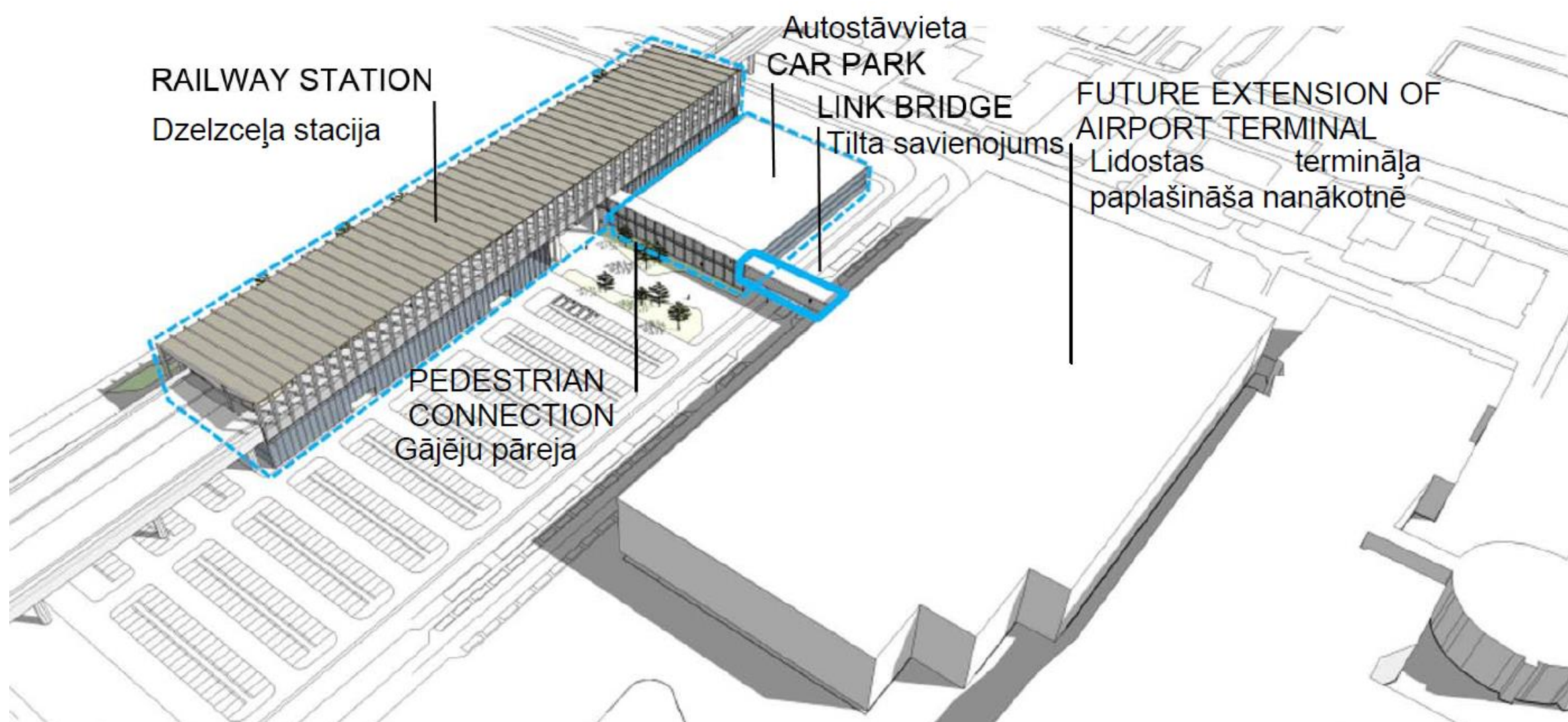
Rail Baltica - Riga International Airport Station

- Rail to **Air**
- First Rail Baltica design contract in Baltic States
- Shuttle services
- Passenger and cargo traffic



Rail Baltica - Riga International Airport Station

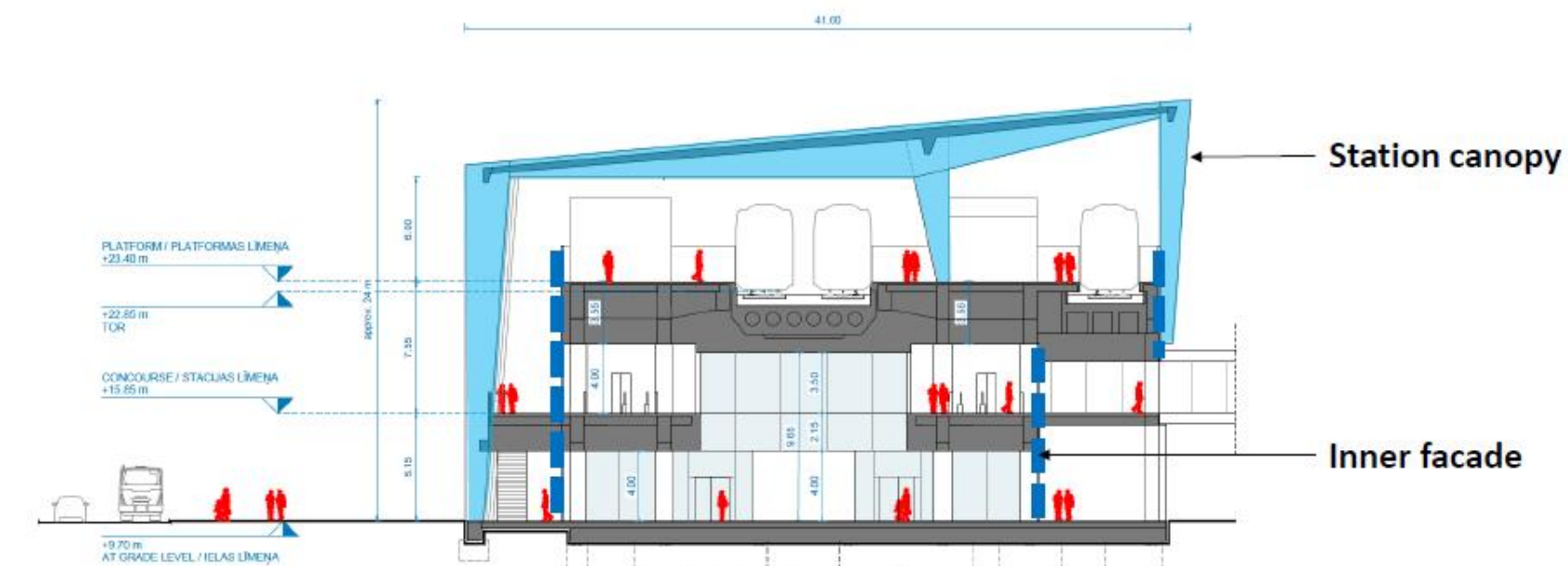
- Synergy with the largest Airport in Baltics
- Railway-Airport connection with European capital



2 Canopy Implementation

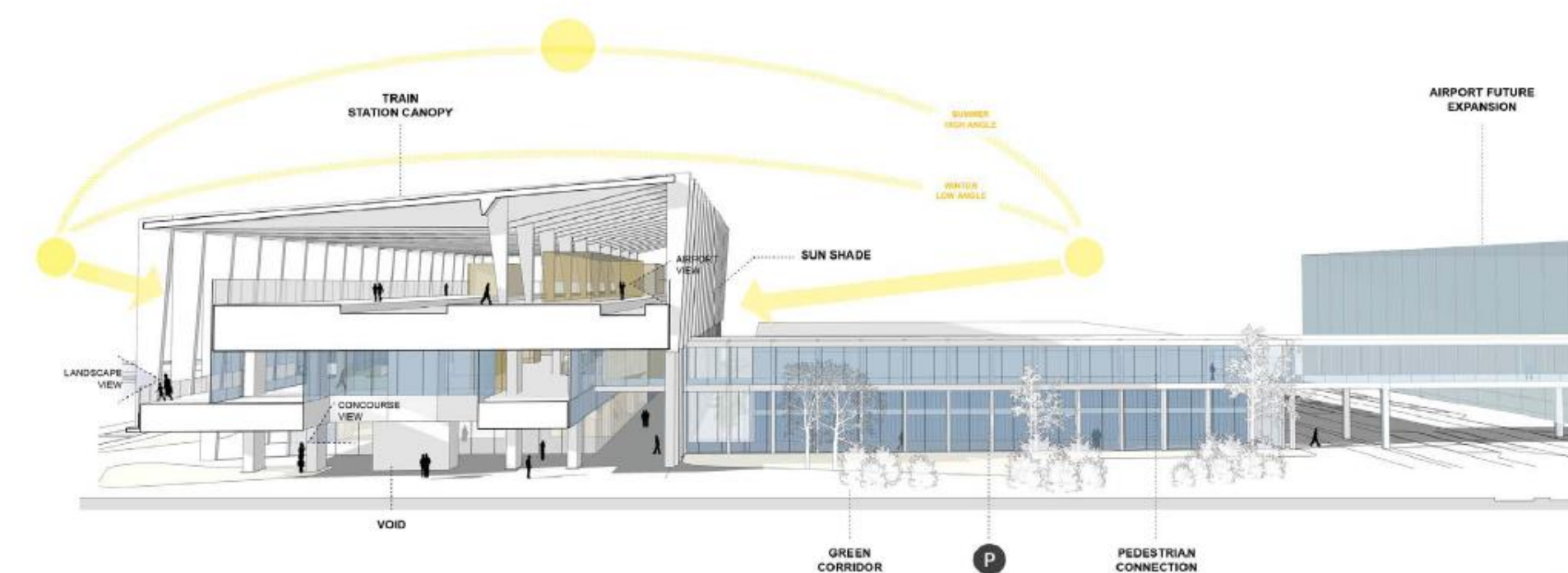
RAIL BALTICA'S AIRPORT RIGA RAILWAY STATION - 14th September 2018

Station cladding



Station cladding

- External screen, used to solve the misalignment between the station and the airport
- Vertical fins for direct light shading
- Minimum impact of structural columns
- Glass inner facade to maximize the interior lighting
- Open view towards landscape



EIROPAS DZELZCEĻA LĪNIJAS

Rail Baltica

Co-financed by the European Union
Connecting Europe Facility

11

PROSiV



SUCCESS **=** ➤ Sinergy
 ➤ Connectivity
 ➤ Mobility

SUCCESS **≠** km of railway



A decorative line graphic on the left side of the slide. It starts with a horizontal line from the left edge, then splits into two parallel horizontal lines, and finally joins back into a single horizontal line ending in a small circle.

Thank You for
your attention



Co-financed by the Connecting Europe
Facility of the European Union